

MOSTLY NUDES WITH BOOKS





My last office exhibition was up for a couple of years, but, because of the pandemic, almost no one saw it. We want to have a new start in 2022 and to celebrate the twentieth anniversary of the Koerner Center dedication in the spring of 2023. We are planning an exhibition by Daniel Rosner in the fall, a second exhibition of Henry Koerner's art (mostly recent gifts to the Koerner Center by Joseph Koerner) in the spring, and my office exhibition through the academic year.

The core of the office exhibition is nine small sculptures: three small copies of Rodin, a copy of the *Barberini Faun*, and five originals by Josep Bofill, Richard MacDonald, Bruce Sargeant, and Karen Wright. The sculptures are mostly male, but, for balance, I have three nude female drawings, one painting, and two photographs of nude couples on the walls behind the sculptures. Two of the books are by or about the late Richard Benson, a former dean of the Yale School of Art and a close friend who died in 2017. The two other books are a Bible (which I purchased in 1953) and my oldest book, a first edition of Sir Edward Barry on wines of the ancients, printed in London in 1775.

Gary L. Haller
Curator and Director

19 September 2022 to 22 May 2023
Exhibition open by appointment; call (203) 432-8227

1

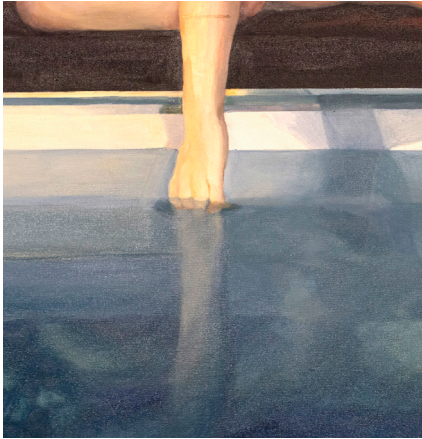


FOUR DRAWINGS,
TWO PHOTOGRAPHS OF
COUPLES, AND ONE
PAINTING OF A WOMAN

Donovan, Jeremiah. *Seated Woman Nude*, ca. 1950. Crayons on brown paper, 8.5 × 8.5" ¹

Frank, Natalie. *Self Portrait – Reflection*, 2001. Oil on canvas, 18 × 36" ²

2



Gold, Jeffrey. *Study for Laura*, 1993. Graphite on paper, 30.25 × 30" *inside back*

Lynes, George Platt. *Mythology: Pygmalion*, 1939. Gelatin silver print, 13 × 10"

Lynes, George Platt. *Nicholas Magallanes and Marie-Jean*, 1941. Printed from original negative, 18.5 × 14.5" ³

3



Tchelitchew, Pavel. *Erotic Couple*, 1932. Ink drawing on paper, 7 × 10.5"

Vallejo, Dorian. *Woman's Back*, 1994. Graphite on paper, 14 × 17"

SIX SCULPTURES OF MEN,
ONE OF A FAUN, ONE OF A
COUPLE, AND ONE OF A HAND

Bertolin, Flavio. *Barberini Faun*, 2022. Scaled-down replica in cast marble, 17 × 12 × 13" *inside front*

Bofill, Josep. *Love*, 1985. Bronze, 7.09 × 1.97 × 1.58"

MacDonald, Richard. *Flair Across America*, 1996. Bronze scaled-down replica, 20 × 15.5 × 7.5"

Rodin, Auguste. *The Age of Bronze*, 1875. Resin with bronze finish, scaled-down replica, 21 × 5.25 × 5.25"

Rodin, Auguste. *Adam*, 1880. Scaled-down replica in bonded bronze, 15 × 6 × 5.5" ⁴

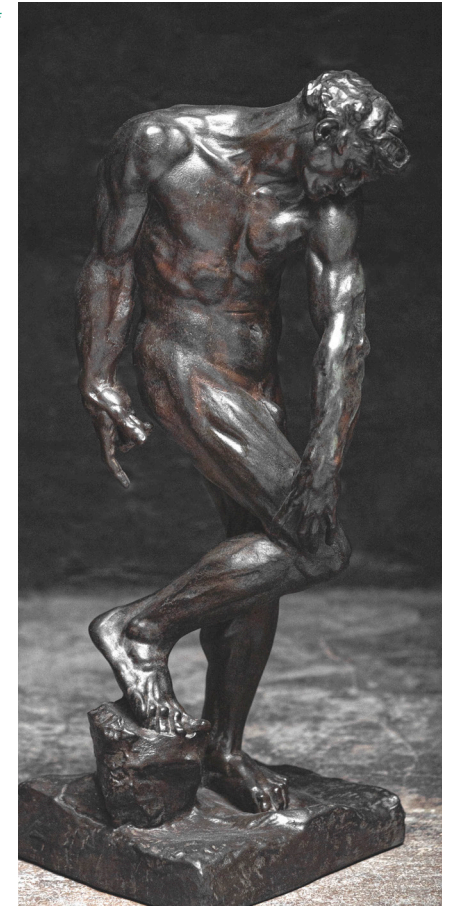
Rodin, Auguste. *Left hand*, 1885–1886. Resin replica, 5 × 3 × 2" *cover*

Sargeant, Bruce. *Swimmer with Ball*, 1936. Cast bronze sculpture, 34 × 10.5 × 6"

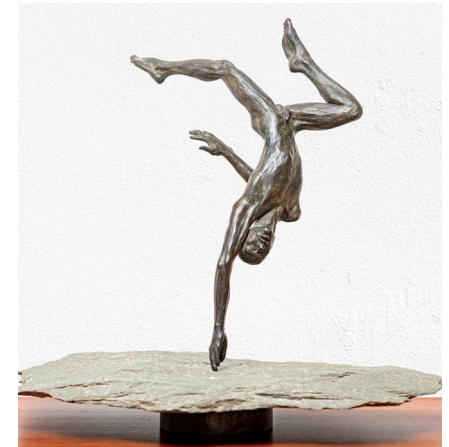
Sargeant, Bruce. *Young Athlete*, 1936. Cast bronze sculpture, 34 × 10.5 × 6"

Wright, Karen. *Earth Bound*, 1996. Bronze, 16 × 11 × 5" ⁵

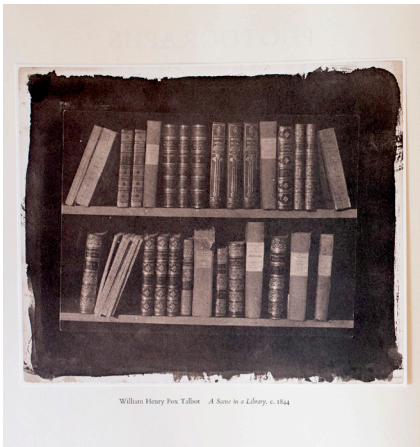
4



5



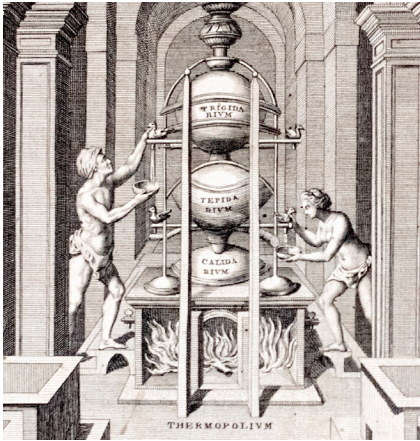
6



FOUR BOOKS COLLECTED BETWEEN 1953 AND 2022

Apraxine, Pierre. *Photographs from the Collection of the Gilman Paper Company*, with plates by Richard Benson. Verona, Italy: White Oak Press, 551 of an edition of 1,200, 1985⁶

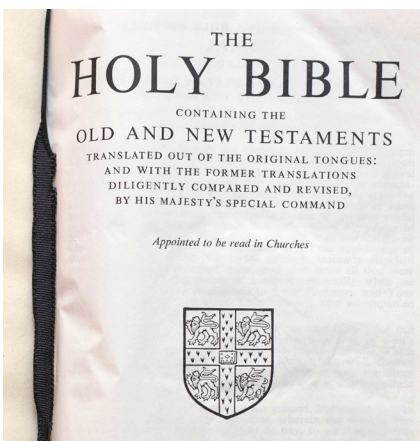
7



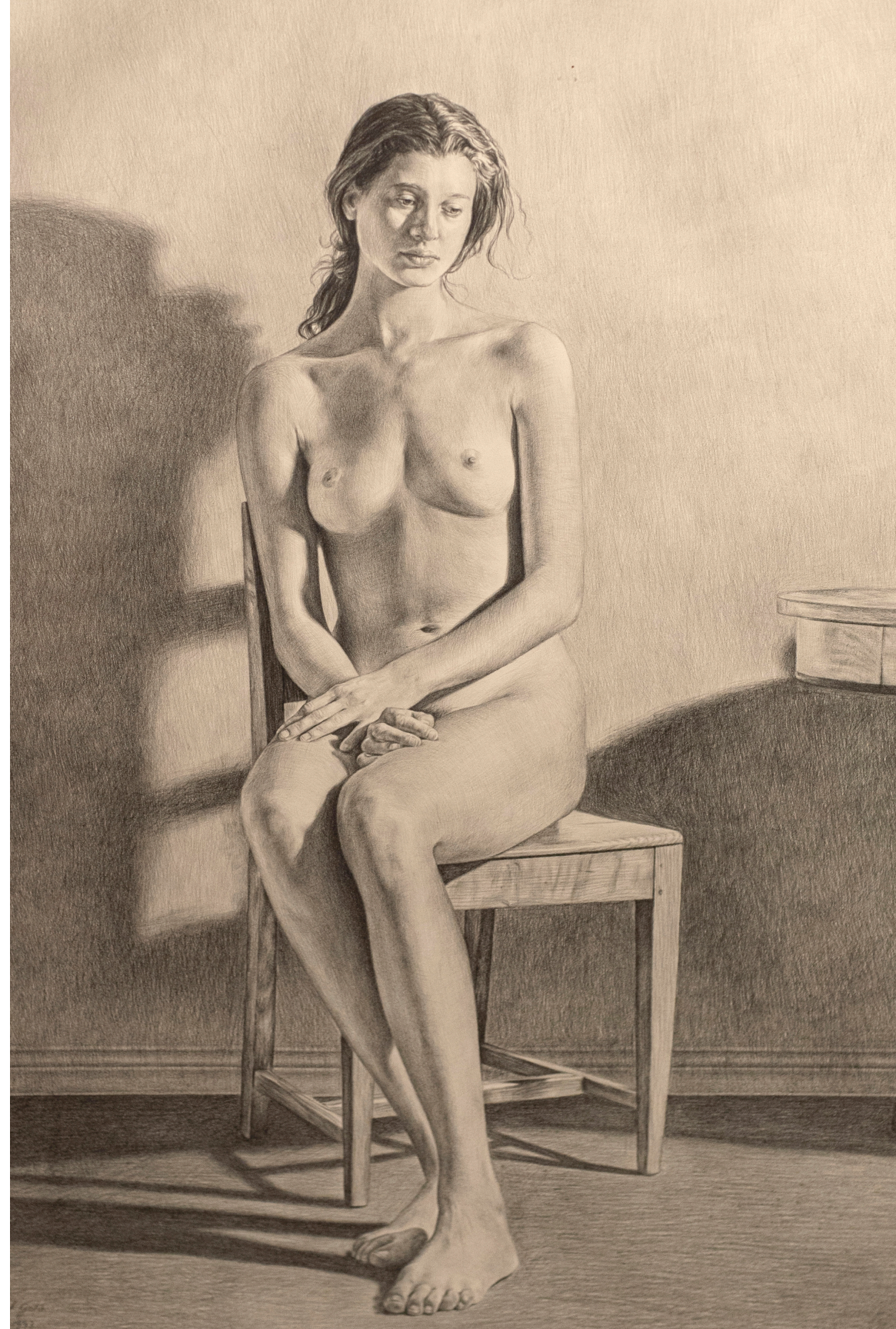
Barry, Sir Edward. *Observations Historical, Critical, and Medical, on the Wines of the Ancients: And the Analogy between Them and Modern Wines. With General Observations on the Principles and Qualities of Water, and in Particular on Those of Bath*. London: Printed for T. Cadell, 1775⁷

Holy Bible. Cambridge: Cambridge University Press, ca. 1950⁸

8



Object Lesson: On the Influence of Richard Benson. Aperture, 2022



CREDITS

Matthew Fried, Photographer

Sidney Hirschman, Designer

Jenna-Claire Kemper, Executive Director

Yale Office of the University Printer

Yale *Henry Koerner Center*